

CHAPTER 3 BUILDING PLANNING

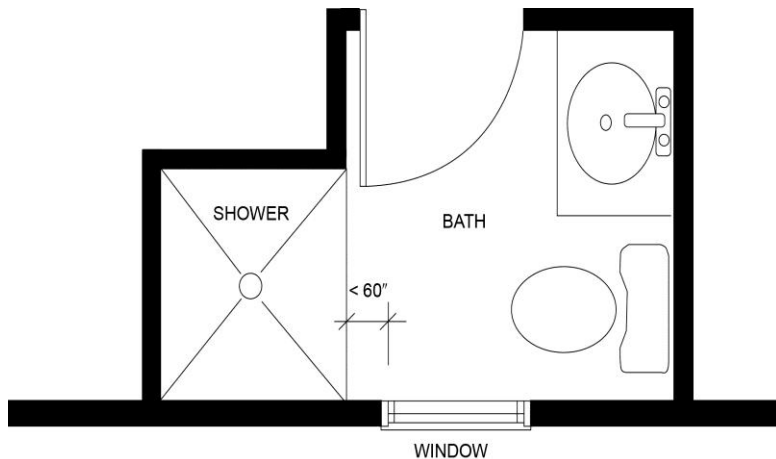
SECTION R308.4.5 2012 Edition IRC Interpretation 18-14 Issued 7-23-14 RE_12_18_14

R308.4.5 Glazing and wet surfaces. Glazing in walls, enclosures or fences containing or facing hot tubs, spas, whirlpools, saunas, steam rooms, bathtubs, showers and indoor or outdoor swimming pools where the bottom exposed edge of the glazing is less than 60 inches (1524 mm) measured vertically above any standing or walking surface shall be considered a hazardous location. This shall apply to single glazing and all panes in multiple glazing.

Exception: Glazing that is more than 60 inches (1524 mm), measured horizontally and in a straight line, from the water's edge of a bathtub, hot tub, spa, whirlpool, or swimming pool.

• • • • •

Q: A window is located in the wall perpendicular to the opening into the shower enclosure, not facing the shower enclosure. The bottom edge of the glazing is less than 60 inches measured vertically above the standing surface and less than 60 inches measured horizontally from the shower enclosure. Is the glazing considered a hazardous location?



A: No.

This section is applicable only to the glazing in walls and enclosures enclosing the shower and to glazing in walls facing the shower.

Since the glazing is not within the shower enclosure or in a wall facing the shower enclosure, it would not be considered a hazardous location in accordance with Section R308.4.5.

Section R308.4.3 may also be applicable based on the end use configuration of the glazing.